

NAC-2500

Fingerprint Access Controller



NAC-2500

Designed and produced using the sensor and algorithm that only NITGEN's outstanding fingerprint recognition technology has made possible, this fingerprint recognition Access control system is capable of speedy authentication using fingerprint data. With this product have we made it possible for you to build a more improved and efficient security system for a lower installation cost. In addition, this product offers you enterprise level entry management and employees' work hour management with its TCP/IP communication-based network structure, and enhanced server management program.



Product classification

Product Name	Model	Model name	Contents	
NAC-2500	Std.	NAC-2500	Standard type	
		NAC-2500M	MIFARE card type	
		NAC-2500R	HID card type	
	SOC	NAC-2500MS	MIFARE SOC card type	
		Card reader	NAC-2500MC	MIFARE Card reader
			NAC-2500RC	HID Card reader

S / R / M Type

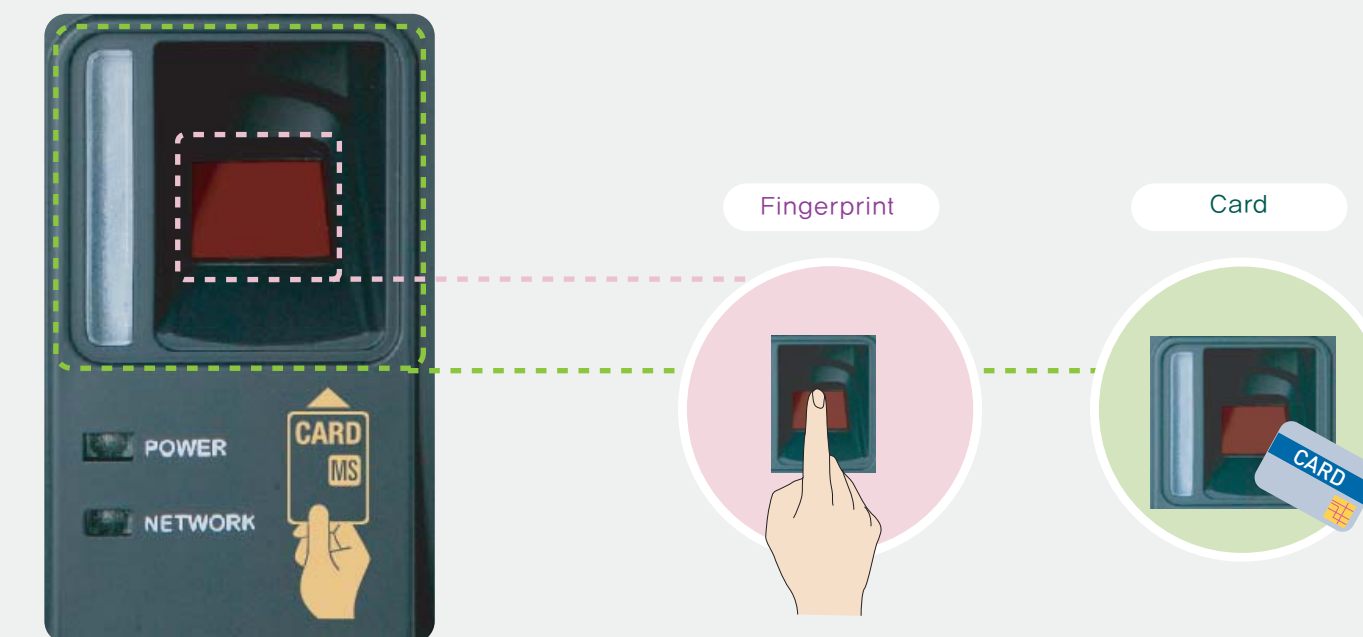
Special Features of the Product

- Capable of supporting various communication protocols, it can be used in numerous application areas.
 - TCP/IP : compatible with access manager(OPTION)
 - RS-485: Functions with your company's custom controller
 - Wiegand
 - In : Functions with card readers currently in use
 - Out : Provides various portions of formats, User ID or Card ID output
- Suitable for employees' work hour management with the function keys provided
 - Provides four separate keys/ keys can be used in combination (starting work and finishing work, going out, returning to work, etc)
- Enhanced user configuration feature(ID digits, sensor option, operation mode, etc)
- Enhanced User Convenience
 - Auto-on
 - Provides Shortcut ID / Group Matching Feature(M / R Type)
 - LCD : 2 line graphic LCD (supports various languages)
 - LED : Status LED 2 each, Authentication result LED 1 each
 - Voice Guide : Voice Output
- Supports various authentication media, making it possible to configure as required by different security methods.
 - Fingerprint/Password/RF card (option: HID, MIFARE), combined use is possible

Specifications

Section	R/M Type	MS Type	MC/RC Type
Material	ABS/PC		
Size	90 (W) X 205 (L) X 50 (H)		
Sensor Type	Type	Optical	
	Resolution	500 [DPI]	
	Mode	1:1, 1:N, Short ID matching	1:1 matching
Authentication	Fact	Fingerprint, Password, RF card (HID, MIFARE)	Password, RF card (HID, MIFARE)
	Time	Less than 1 second	
Operation	SO	Stand-alone	X
	NL	Server matching	
Environment	Temperature	-20 ~ 60 [°C]	
	Power	12 / 24 [V]	
Maximum number of registrations	2,000 Users (1 fingerprint per 1 user)	20,000 Users	10,000 Users
Log	3,000 ea		
Authentication Rate	FRR : 1/1,000	FAR : 1/100,000	X
Function Key	F1 / F2 / F3 / F4		
Communication	TCP/IP, Wiegand Input / Output, RS-485		
Certification	MIC, CE, FCC		

Input Method



System Structure



1. Terminal

- Performing user authentication
- Door Control

2. Client's PC

- Remote Manager
- Remote Monitor

3. Server PC

- Terminal communication
- DB Management
- Remote Manager
- Remote Monitor
- Log data collection

4. Others

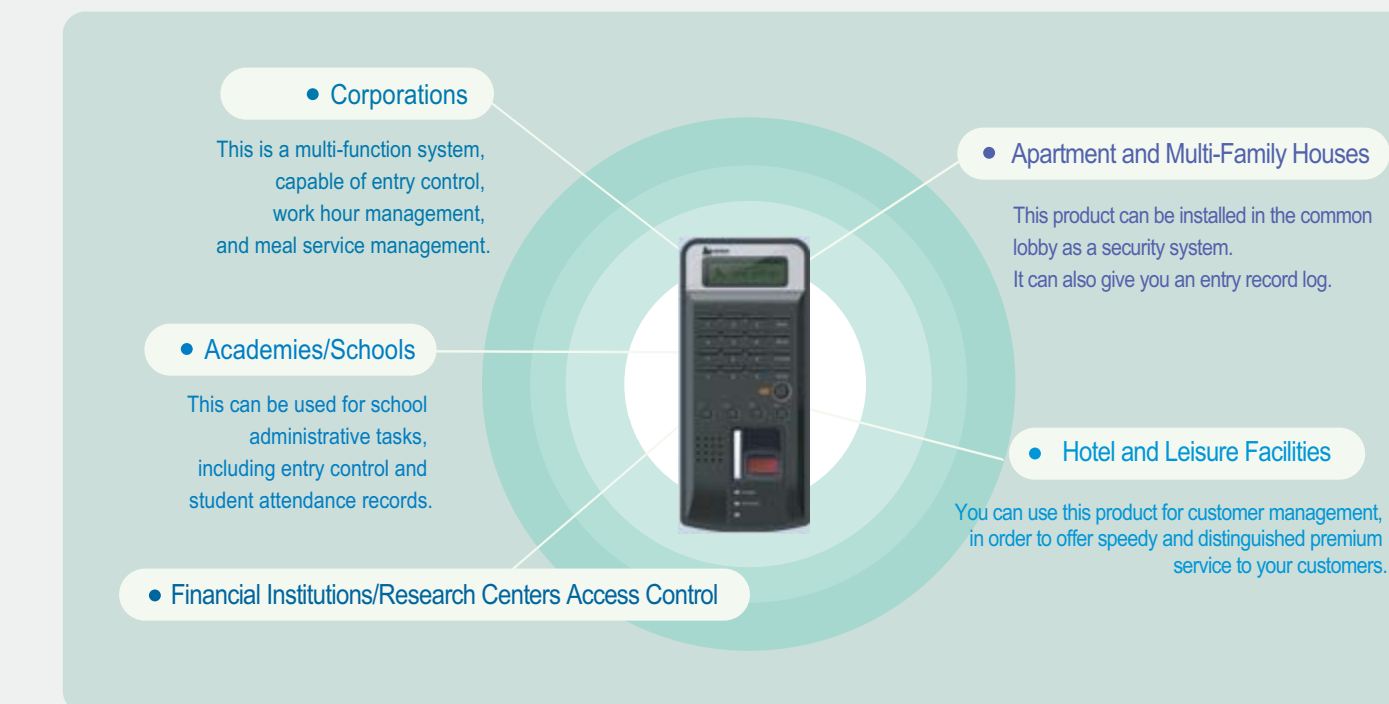
- Encoded Fingerprint data / Communication
- Access restriction available per time and period
- Auto On / LFD

* SoC Type operates with AccessManager SOC only, also NAC2500-SOC will not operate with other NAC2500 or NAC3000 A/C Series.

System (AccessManager™)

With the Access Server, Remote Manager, and Remote Monitor, this product created a program that is capable of user management and monitoring. You can connect up to 255 terminals in a network, and verification is possible at the server, by using its own DB. In addition, it comes with remote control features, so that you can register and monitor users even in places other than the room where the server is installed.

Product name	Item	AccessManager™ (Server management program)					
Components		Access Server / Remotemanager / Remote monitor					
Max Terminals		255 units / network					
No. of Remote Clients		8 units					
OS		Windows 98SE / 2000/ ME / XP / 2003 Server					
Max User in DB	DB	MS SQL			MDB		
	Model	M / R	MC / RC	MS	M / R	MC / RC	MS
	Server	10,000 user	10,000 users	30,000 users	10,000 users	10,000 users	10,000 users
	Terminal	2,000 users	10,000 users	20,000 users	2,000 users	10,000 users	2,000 users



NITGEN Co.,Ltd

Sam-Oh Bldg, 3rd Floor, 905-4 HoGye-dong, DongAn-gu, AnYang city, Gyeonggi-do, Korea
Tel. +82-31-451-9400 Fax. +82-31-451-6723 URL: www.nitgen.com

